

A NEW SUBGENUS *ELEVANOSA*, AND NEW SPECIES OF *GYPONA* (HOMOPTERA: CICADELLIDAE)¹

Dwight M. DeLong²

ABSTRACT: A new subgenus, *Elevanosa*, and a new species, *Gypona* (*E.*) *vertara* n.sp., from Argentina are described.

DESCRIPTORS: *Gypona* leafhopper, *Elevanosa vertara*, Homoptera, Cicadellidae.

A study of South American specimens of Gyponinae has revealed two specimens with head and genital structures that are quite different from related species of *Gypona*. In general form and coloration *E. vertara* resembles species of *Curtara* but the type of crown margin and the male genital structures are more like *Gypona*. It is placed as a new subgenus of *Gypona*.

Subgenus *Elevanosa*, n. sub.

Crown as in *Gypona* with a distinct margin, but margin indented at about middle each side forming a central median lobe which is slightly upturned at apex. Ocelli about equidistant between proximal eye and median line a little closer anterior than posterior margins. Male aedeagus without parameres but with a median ventral process extending ventrally. Pygofer with an unsclerotized ventrocaudal lobe and a heavily sclerotized dorsocaudal process.

Type species: *Gypona E. vertara* n.sp.

Gypona (*Elevanosa*) *vertara* n.sp.

(Figs. 1-6)

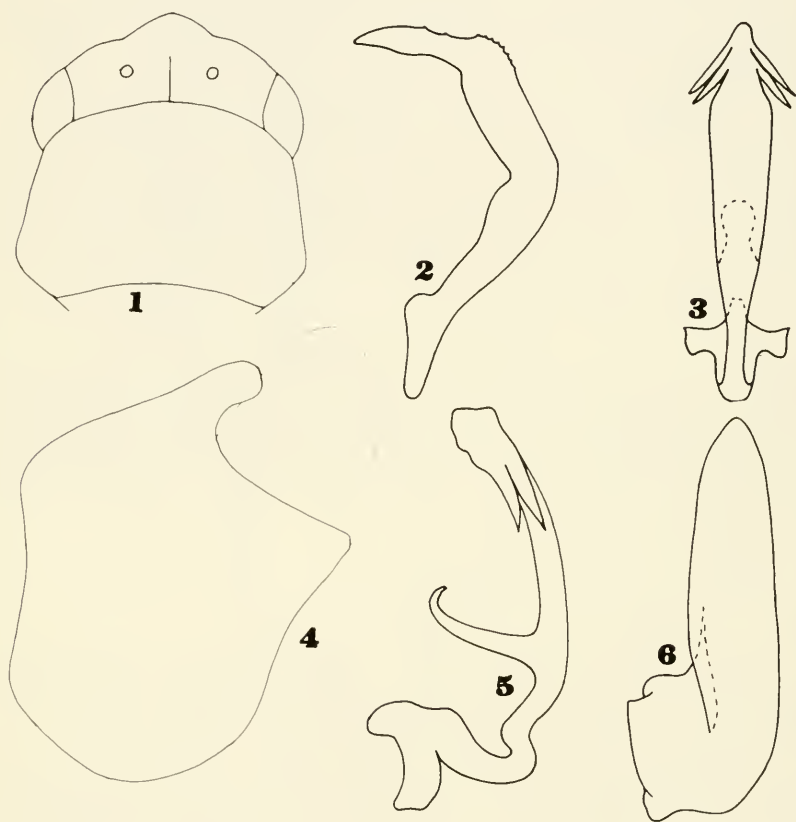
Length of male 9.5 mm, female unknown. Crown almost twice as broad between eyes at base as median length, with a distinct margin which is indented about half the distance between eye and apex each side forming an apical, slightly produced lobe. Color pale yellowish brown with a fine black line on margin of crown.

Male genitalia with plates almost four times as long as median width, apex bluntly angled. Style with basal half of blade short and broad, abruptly narrowed at two thirds its length, producing a narrow apical portion which is bent dorsally and pointed at apex. Aedeagus bearing a pair of short proximal lateral processes each side of apex extending laterobasally. The aedeagal shaft bears a slender ventral process extending ventrally which is one-third length of shaft. Pygofer with an unsclerotized lobe extending caudally on basal half and a heavily sclerotized blunt rounded dorsal projection extending ventrocaudally.

¹ Accepted for publication: June 12, 1976

² Department of Entomology, The Ohio State University.

Holotype male Argentine: La Rioja Prov., Patquia, K.J. Hayward, B. M. 1933-333.
Paratype 1 ♂ Argentine: 1932-33, K. J. Hayward 1933-187. Both types in the British
Museum of Natural History.



Figs 1-6 *Gypona (E) vertara* n.sp. 1-dorsal view, head & thorax; 2-style, lateral view; 3-aedeagus, ventral view; 4-pygofer, lateral view; 5-aedeagus, lateral view; 6-plate, ventral view.